

CATALOG CODE
SC - X,X - XX

TORQUE (Nm)
1.0
1.5
2.0
2.5
3.0
3.5
4.0

BORE (SHAFT INTERFACE) & STYLE
02 - 6mm "D" SHAFT
03 - 8mm & 5/16IN CROSS PIN
04 - 8mm & 5/16IN "D" SHAFT



REELL PRECISION MANUFACTURING 1259 WILLOW LAKE BOULEVARD SAINT PAUL, MINNESOTA 55110-5103, USA	ECO NO: 06696	PART LIFECYCLE: RELEASED		
	APPROVED BY: BOB WAHLSTEDT	DEVELOPMENT CYCLE: PRODUCTION		
	APPROVED DATE: 21DEC23	DESCRIPTION: <h2 style="text-align: center;">SALES DRAWING</h2>		
	PROJECT NO: 0			
ENGINEER: MICHAEL BEALE	PART NO: SC			
DRAWN BY:				REV: R
THIS PRINT IS THE CONFIDENTIAL PROPERTY OF REELL PRECISION MFG.	THIRD ANGLE PROJECTION 	SCALE: 1:1	DO NOT SCALE DRAWING	SHEET 1 OF 2
INTERPRET PRINT PER ASME Y14.5M-2009	DIMENSIONS: [mm] IN			

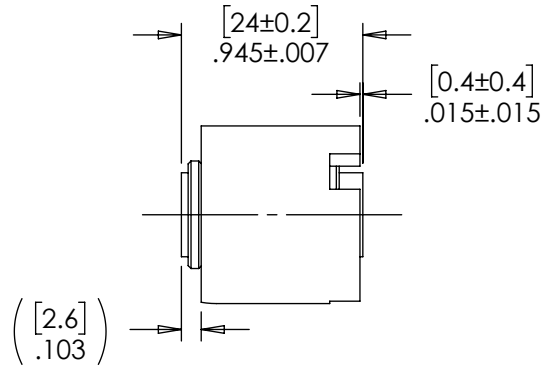
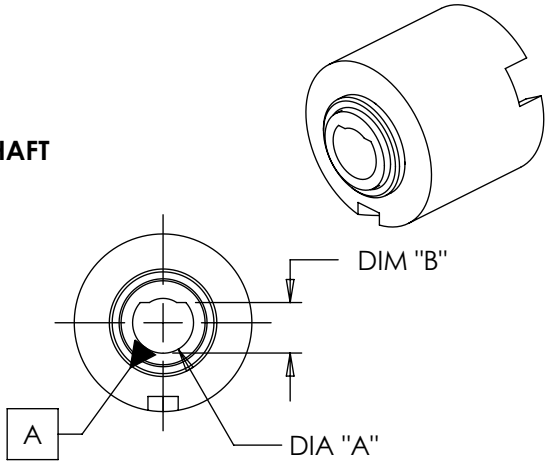
SPECIFICATIONS SUBJECT TO CHANGE

SHAFT NOM.	DIA. "A"	DIM. "B"	DYNAMIC TORQUES	
			1.0 ± 0.2 Nm	8.8 ± 1.76 Lb-in
6mm	[6.01/6.2]	[5.01/5.1]	1.5 ± 0.3 Nm	13.3 ± 2.66 Lb-in
			2.0 ± 0.4 Nm	17.7 ± 3.54 Lb-in
8mm & 5/16	[8.01/8.2] .3153/.3230	[6.64/6.74] .2614/.2654	2.5 ± 0.5 Nm	22.1 ± 4.42 Lb-in
			3.0 ± 0.6 Nm	26.6 ± 5.32 Lb-in
			3.5 ± 0.7 Nm	31.0 ± 6.20 Lb-in
			4.0 ± 0.8 Nm	35.4 ± 7.08 Lb-in

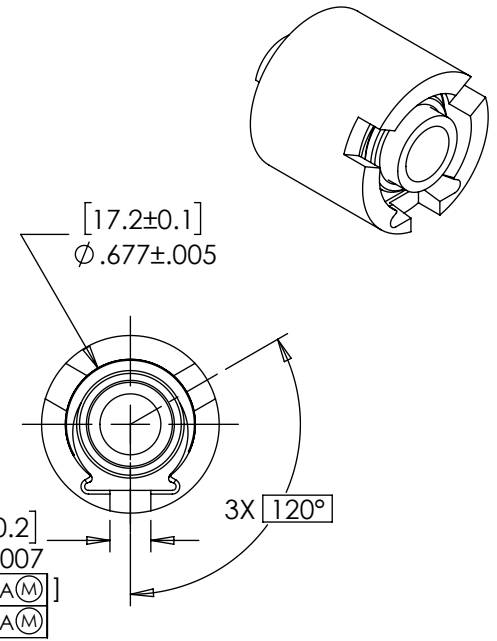
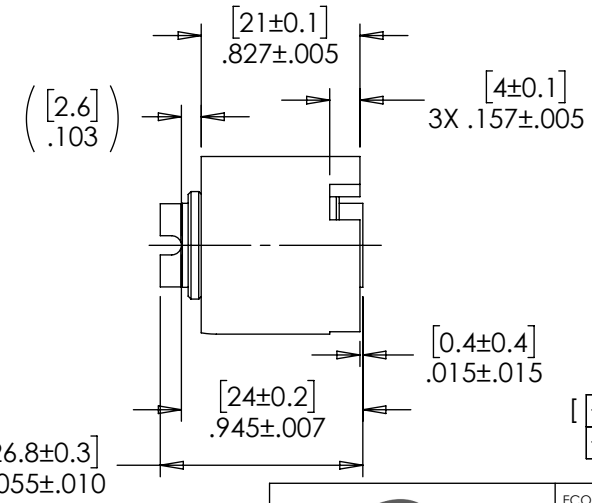
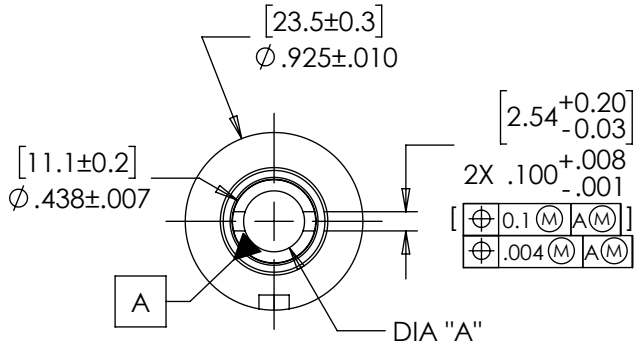
NOTES:

- LIFE: 30,000 CYCLES WHEN DUTY CYCLE IS LESS THAN 10% AND ROTATIONAL SPEED IS LESS THAN 40RPM. 30 SECONDS OF MAXIMUM CONTINUOUS ACTIVATION.
- STATIC TORQUE IS NORMALLY WITHIN 10% OF DYNAMIC TORQUE.
- MATERIALS:
 POWDERED IRON HOUSING
 POWDERED IRON SHAFT
 HARDENED STEEL TORQUE ELEMENT
 STEEL RETAINING COLLAR
 PLASTIC INSERT
 MINERAL OIL BASED LUBRICANT

"D" SHAFT



CROSS PIN SHAFT



SPECIFICATIONS SUBJECT TO CHANGE

	ECO NO: 06696	PART LIFECYCLE: RELEASED
	APPROVED BY: BOB WAHLSTEDT	DEVELOPMENT CYCLE: PRODUCTION
	APPROVED DATE: 21DEC23	DESCRIPTION:
	PROJECT NO: 0	SALES DRAWING
REELL PRECISION MANUFACTURING 1259 WILLOW LAKE BOULEVARD SAINT PAUL, MINNESOTA 55110-5103, USA	ENGINEER: MICHAEL BEALE	
	DRAWN BY:	
THIS PRINT IS THE CONFIDENTIAL PROPERTY OF REELL PRECISION MFG.	THIRD ANGLE PROJECTION 	PART NO: SC
INTERPRET PRINT PER ASME Y14.5M-2009	DIMENSIONS: [mm] IN	SCALE: 1:1 DO NOT SCALE DRAWING
		REV: R
		SHEET 2 OF 2